

1st Choice.....
2nd Choice.....

COAT

WAIST LENGTH
From 1 to 2 (Fig. 2)

PULL LENGTH
From 1 to Length Desired

WIDTH OF BACK
From X to X (Fig. 2)

INSIDE SLEEVE LENGTH
From 4 to 5 (Fig. 1)

CHEST
Around C (Fig. 1) Tape well up under arms

BUST
Around B (Fig. 1)
Tape well up around blade, fullest part of bust

LOW BUST
Place tape at 1 around neck 3 to full-est part of bust 6

FRONT LOW WAIST
Continue from 6 to 7

Half Back
Measure largest part of upper arm at M

If we have made clothes for this customer previously, please give date and Order No.

COAT STYLE No.

Style of Pockets

TRY ON?

TOPCOAT
To be worn over jacket
YES..... NO.....

COAT—Medium, Loose, Snug
Give size of dress worn by customer.

SKIRT STYLE No.

SKIRT

WAIST (W)

HIP (H), 4" Below W

LOW HIP (LH), 9" Below W

FRONT LENGTH
From 8 to floor (Fig. 1)

BACK LENGTH
From 2 to floor (Fig. 2)

FINISHED LENGTH
From 2 below hand to length desired

Specify No. of inches from finished length to floor

SLACKS

Measure outside length from **TOP OF WAISTBAND**. Give exact length wanted.

RISE—Take from top of waist-band to chair.

INSIDE SEAM

SLACK STYLE No.

Customer's Name

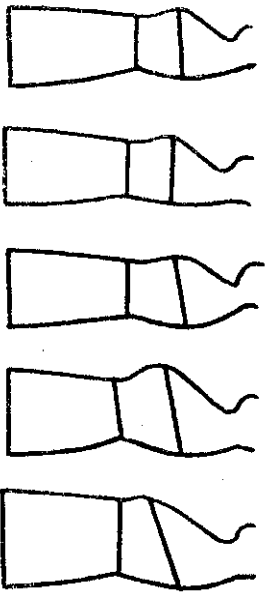
Customer's Address

Date to be Shipped

C.O.D.?

Mark Prominently Customer's Attitude
Please Answer All Questions Regarding Customer's Build

Indicate figure most closely resembling customer's posture



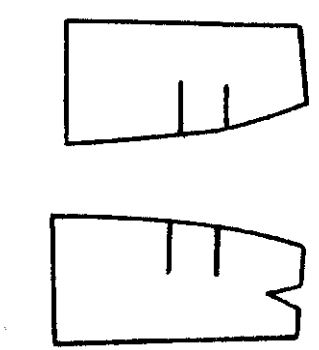
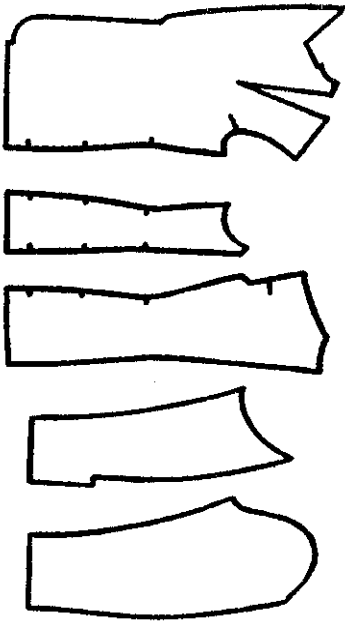
Normal Erect Sloop Prominent Bust & Hips Straddle Waist
When taking Chest, Bust and Hip measurements, stand behind customer, passing tape over most prominent part. Waist measurement is to be taken snugly, standing in front of customer.

Height? **Weight?** **Age?**

Please Do Not Write in This Space — For Designer's Use

COAT PAT. No.

SKIRT PAT. No.



SLACK PAT. No.

Invoice No.

Order No.

Cloth

Yardage Used

- Open Bust
- Right Sh. Lower
- Erect
- Raise W..... Pkts. & Btms.
- Square Shld.
- Raise Sh. Pt.
- Lower Bust
- Dip Neck
- Cover Buttons
- Close Bust
- Left Sh. Lower
- Sloop
- Lower W..... Pkts. & Btms.
- Slope Shld.
- Lower Sh. Pt.
- Raise Bust
- Forward Points
- Weltd Holes

FIG. 1

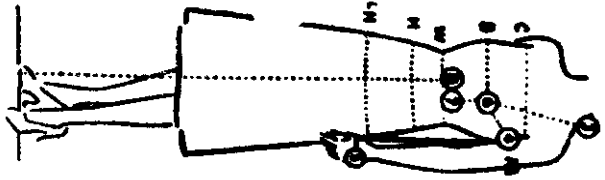


FIG. 2

